

from the glass kaleidoscope studio of

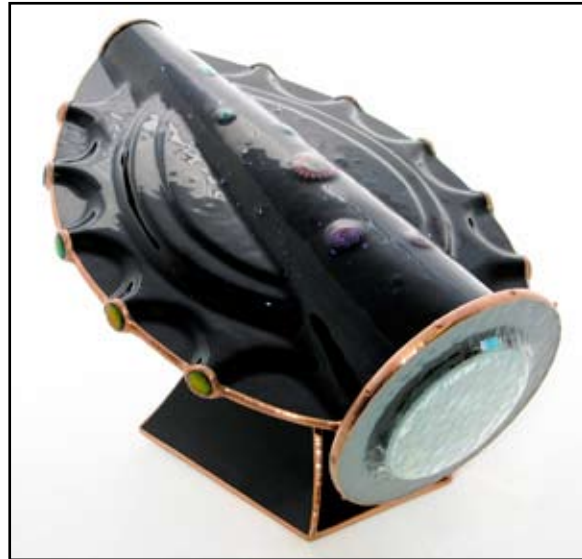
Charles Karadimos

27325 Ridge Road • Damascus MD 20872 • 301-253-5789 • Karascopes@aol.com • www.Karascopes.com



100% Handmade

Charles works alone, making each part of every kaleidoscope by hand. There are no machined parts. Each kaleidoscope has its own unique personality, produced to the artist's own high standards of quality.



Expert Quality Craftsmanship

Charles, a self-taught artist, began working with glass in 1975, and has focused his attention on kaleidoscopes exclusively since 1979. Every piece is an original, signed, and numbered work of art.

His work is exhibited in museums, galleries, and private collections throughout the world. He is one of the Directors of the Brewster Kaleidoscope Society, an international organization of kaleidoscope enthusiasts.



Precision Optics

Charles is primarily concerned with creating a crisp, vibrant, interior image in each piece, exploring and developing mirror systems with crystal clear optics and perfect symmetry. This thoughtful attention to detail enables Charles to create beautifully intricate and detailed images that capture and hold the viewer's attention.

from the glass kaleidoscope studio of

Charles Karadimos

27325 Ridge Road • Damascus MD 20872 • 301-253-5789 • Karascopes@aol.com • www.Karascopes.com



Luminosity ▶

A cone-shaped, slumped glass body which has been back-painted, producing a soft pastel gradient effect. The object case is a combination of iridescent glass with selected surfaces ground off to produce a soft, pastel cast over and behind the 9-point image. (two-mirror system). 10" tall ... \$540



Classic Cone ▶

A well-balanced, hand-held scope that stands upright with built-in feet. A lens in the eyepiece enhances the superb two-mirror 12-point image. 10" tall. Available in many colors ... \$450



Offset Mini ▲

This 4" slumped glass kaleidoscope has offset, embossed half circles on either side of the main cone. The two-mirror 8-point image is very intricate ... \$260



Dichro Mini ▲

This 4" mini scope is slumped, patterned, dichroic glass, with a treated dichroic object case filled with many hand selected and lampworked dichroic glass pieces. A two-mirror, 8 point system produces incredibly intricate and literally "glowing" images ... \$350



Ambiance ▶

(The special atmosphere or mood created by a particular environment)

The exterior is slumped white glass with inserts of mouthblown, antique glass. A tapered two-mirror system produces a large 10-point image. The object case is specially treated to produce a soft, changing pastel background behind incredible, intricate, and infinitely random images. 10" tall. ... \$650



◀ Droplet

A mini 4" scope with a slumped ripple emanating from the main central cone body, a perfect fit in the hand and fingers. The two-mirror system creates a very intricate and precise 8-point image. Available in many colors ... \$260



Prices good through April 1, 2010

from the glass kaleidoscope studio of

Charles Karadimos

27325 Ridge Road • Damascus MD 20872 • 301-253-5789 • Karascopes@aol.com • www.Karascopes.com



Mandala White : The sleek body of the scope fits nicely in one's hand. Unique mandalas are created from individual colorbars that are sliced, arranged, and fused to the white glass slumped body. A diagonal band of color is also fused to the body to accent the mandala design.

Mandala White has a two-mirror, 10-point system. The dry object case is filled with a slice from the exterior mandala design, dry filled ampoules and a variety of lampworked pieces. 10" tall x 4.5" wide
Edition of 20



Mandala Black : features the same sleek body and fused characteristics as "Mandala White," with the main body being black instead of white. The contrasting fused mandala design is very elegant and striking on this black body.

Mandala Black also has a two-mirror, 10-point system, and the dry object case is filled with dry filled ampoules and a variety of lampworked pieces, coordinated to the exterior fused design. 10" tall x 4.5" wide

Edition of 20

... \$950 each ...

See my website for availability

ODYSSEY

BY CHARLES KARADIMOS



The exterior body of "Odyssey" combines a variety of glassworking techniques, from fusing to multi-dimensional slumping ... even down to the handmade glass beads that accent the perimeter edges. A very special bearing is used to attach the free-turning, slumped glass object case, which contains all custom made lampworked, fused and handcut glass. A two-mirror system produces perfect 10 point images.

"Odyssey" is a limited edition of 5, with each piece bearing its own individual traits. Three in the edition are black with fused dichroic embellishments. The other two are white, with a special treatment added for a colorful accent.

11" tall x 12" wide x 16" long

\$4,200

"Odyssey" ... the journey that starts here, never ends.

from the glass kaleidoscope studio of

Charles Karadimos

27325 Ridge Road • Damascus MD 20872 • 301-253-5789 • Karascopes@aol.com • www.Karascopes.com



... Dichro II ...



Exterior features: Clear and patterned dichroic glass, fused and slumped into a cone shape, with hand made dichroic beads as accents on the side seams.

Mirror system: Tapered two-mirror, 10-point

Object case: Dichroic treated cell filled with dichroic glass (fused, lampworked, handcut, and heat-treated)

Dimensions: 10 inches tall

Limited Edition of 12 ... \$900

(Two of each of the patterns pictured above)

Sold Out

Dichro III is in the planning stages.
Email me to be contacted when available.



from the glass kaleidoscope studio of

Charles Karadimos

27325 Ridge Road • Damascus MD 20872 • 301-253-5789 • Karascopes@aol.com • www.Karascopes.com



“Sweet 16”



“Sweet 16” is just what the name implies, “sweet.”

The exterior of this new kaleidoscope is completely slumped, from the raised and embossed decorative details on the top side, to the fully slumped feet on the underside.

A tapered two-mirror system produces large and very engaging 16-point images. The object cell contains all glass that is either cut, lampworked, fused, fire-polished or any combination of those techniques, with the selection focusing on intricate randomness and an appealing color balance. The 9” long body displays horizontally.

“Sweet 16” is a limited edition of 16.

(4) sky blue, (4) red, (4) black, (4) white ... The exterior color indicates a “personality” for the interior imagery.

All for the amazing price of ... \$690

In the immortal words of Jackie Gleason “How sweet it is?”
Does anybody remember Jackie Gleason?